

Investment Objective

To achieve long-term capital growth principally from the stock markets of the Asian region excluding Japan.

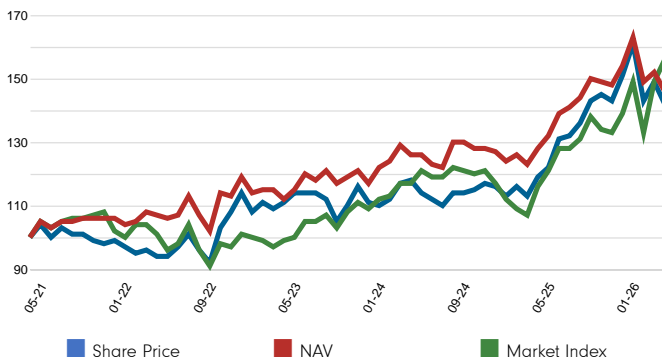
Investment Company Facts

Launch date: 13.06.96
Portfolio manager: Nitin Bajaj, Ajinkya Dhavale
Appointed to trust: 01.04.15, 29.02.24
Years at Fidelity: 23, 15
Total Net Assets (TNA): £ 390m
Ordinary shares in Issue: 63,434,064
Share price: 594.00p
NAV: 615.04p
Discount: 3.42%
Gross Market Gearing: 29.8%
Net Market Gearing: 10.1%

Performance comparator

Market Index: MSCI All Country Asia ex Japan Small Cap (N) Index
 The same index is used in the positioning tables on this factsheet. Past performance is not a reliable indicator of future results. The value of investments can go down as well as up and you may get back less than you invested.

Cumulative performance in GBP (%)



Performance is shown for the last five years (or since launch for funds launched within that period).

Performance to 31.05.26 in GBP (%)

| | 1m | 3m | YTD | 1yr | 3yr | 5yr | Since 13.06.96* |
|--------------------------------------|------|-------|------|------|------|------|-----------------|
| Share Price Cumulative Growth | -4.2 | -11.6 | -0.3 | 20.0 | 28.7 | 42.4 | 744.5 |
| NAV Cumulative Growth | -4.4 | -10.4 | -1.5 | 13.6 | 29.6 | 45.7 | 734.3 |
| Index Cumulative Growth | 4.9 | 4.8 | 17.3 | 34.5 | 57.5 | 55.9 | 559.1 |
| Share Price Annualised Growth | - | - | - | - | 8.8 | 7.3 | 7.4 |
| NAV Annualised Growth | - | - | - | - | 9.0 | 7.8 | 7.3 |
| Index Annualised Growth | - | - | - | - | 16.4 | 9.3 | 6.5 |

Basis: bid-bid with income reinvested, in GBP, net of fees.

Market indices are sourced from RIMES and other data is sourced from third-party providers such as Morningstar.

*Performance commencement date.

Key Risks

The value of investments and the income from them can go down as well as up, so you may get back less than you invest. Overseas investments are subject to currency fluctuations. This investment trust invests in emerging markets which can be more volatile than other more developed markets. This trust invests more heavily than others in smaller companies, which can carry a higher risk because their share prices may be more volatile than those of larger companies and the securities are often less liquid. This trust uses financial derivative instruments for investment purposes, which may expose it to a higher degree of risk and can cause investments to experience larger than average price fluctuations. The shares in the investment trust are listed on the London Stock Exchange and their price is affected by supply and demand. The investment trust can gain additional exposure to the market, known as gearing, potentially increasing volatility.

Portfolio Manager Commentary

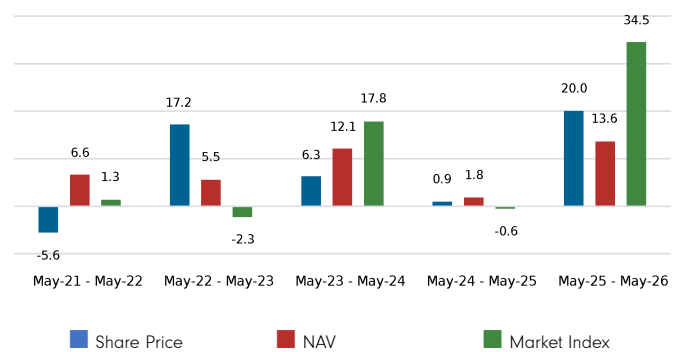
The Trust's NAV rose by +13.6% over the 12-month period ended 31 May 2026, underperforming its reference index, which returned +34.5%. The Trust's share price increased by +20.0% over the same period.

Our process focuses on owning high-quality businesses run by management teams we trust and investing only where we see ample margin of safety. This approach often leads us to take contrarian positions, as undervalued opportunities are typically found in such areas of the market. Consistent with this philosophy, the portfolio maintained limited exposure to Taiwan and South Korea, where several hardware-related companies we do not own continued to rise despite elevated valuations, which weighed on performance. In our view, capital has increasingly been directed towards the broader AI theme without sufficient differentiation between genuine long-term beneficiaries and lower-quality, commoditised businesses with weaker competitive positions. Indonesia also remained the least favoured market by investors. From a sector perspective, stock selection within financial and IT detracted from returns.

Of late, investors appear to be rotating out of growth stocks into value names within the Asian small-cap universe. We believe this trend may continue, as small-cap value stocks remain at a significant discount to their growth counterparts.

At the end of the period, the Trust was overweight consumer discretionary, financials, consumer staples and energy. At a country level, it was overweight China, Indonesia and Australia.

Performance for 12 month periods in GBP (%)



Performance is shown against a hybrid benchmark as calculated by Fidelity. MSCI Asia Pacific Ex Japan Small Cap Index replaced MSCI Asia Pacific Ex Japan as official benchmark from 1 February 2020.

Equity Exposure % Total Net Assets (% TNA)

| | Exposure (% TNA) |
|-----------------------|---------------------|
| Gross Market Exposure | 129.8 |
| Net Equity | 110.0 |
| Other | 0.1 |
| Uninvested Cash | 0.0 |

Notes on Portfolio Construction and a description of how data is calculated and presented are on page 3. Definitions of the terms used in the Equity Exposure table are in the Glossary.

Sector/Industry Exposure (% TNA)

| GICS Sector | Fund | Index | Relative |
|------------------------------|--------------|--------------|----------|
| Financials | 18.5 | 8.4 | 10.0 |
| Consumer Discretionary | 14.8 | 8.8 | 6.1 |
| Consumer Staples | 14.0 | 4.4 | 9.6 |
| Industrials | 12.6 | 17.0 | -4.4 |
| Information Technology | 11.2 | 31.8 | -20.6 |
| Materials | 8.7 | 8.0 | 0.7 |
| Real Estate | 8.1 | 6.7 | 1.4 |
| Communication Services | 7.8 | 2.6 | 5.3 |
| Energy | 7.4 | 1.5 | 5.9 |
| Health Care | 4.5 | 9.0 | -4.5 |
| Utilities | 2.3 | 1.7 | 0.6 |
| Total Sector Exposure | 110.0 | 100.0 | |
| Other Index / Unclassified | 0.0 | 0.0 | |
| Total Equity Exposure | 110.0 | 100.0 | |

Top Positions (% TNA)

| | GICS Sector | Fund | Index | Relative |
|---------------------------------|------------------------|------|-------|----------|
| TAIWAN SEMICONDUCTOR MFG CO LTD | Information Technology | 6.6 | 0.0 | 6.6 |
| HDFC BANK LTD | Financials | 3.4 | 0.0 | 3.4 |
| AXIS BANK LTD | Financials | 3.4 | 0.0 | 3.4 |
| BANK CENTRAL ASIA TBK PT | Financials | 3.1 | 0.0 | 3.1 |
| INDOSAT TBK PT | Communication Services | 2.4 | 0.0 | 2.4 |
| ADARO ANDALAN INDONESIA PT | Energy | 2.2 | 0.0 | 2.2 |
| CHINA MENGNIU DAIRY CO | Consumer Staples | 2.1 | 0.0 | 2.1 |
| TOPCO SCIENTIFIC CO LTD | Information Technology | 2.1 | 0.2 | 1.9 |
| SIS LTD | Industrials | 2.0 | 0.0 | 2.0 |
| BOC AVIATION LTD | Industrials | 1.9 | 0.0 | 1.9 |

Top Overweight Positions (% TNA)

| | Fund | Index | Relative |
|---------------------------------|------|-------|----------|
| TAIWAN SEMICONDUCTOR MFG CO LTD | 6.6 | 0.0 | 6.6 |
| HDFC BANK LTD | 3.4 | 0.0 | 3.4 |
| AXIS BANK LTD | 3.4 | 0.0 | 3.4 |
| BANK CENTRAL ASIA TBK PT | 3.1 | 0.0 | 3.1 |
| INDOSAT TBK PT | 2.4 | 0.0 | 2.4 |
| ADARO ANDALAN INDONESIA PT | 2.2 | 0.0 | 2.2 |
| CHINA MENGNIU DAIRY CO | 2.1 | 0.0 | 2.1 |
| SIS LTD | 2.0 | 0.0 | 2.0 |
| BOC AVIATION LTD | 1.9 | 0.0 | 1.9 |
| TOPCO SCIENTIFIC CO LTD | 2.1 | 0.2 | 1.9 |

Positions Concentration (% TNA)

| | Fund | Index |
|--------|------|-------|
| Top 10 | 29.2 | 7.8 |
| Top 20 | 44.4 | 12.1 |
| Top 50 | 72.8 | 20.8 |

Market Capitalisation Exposure (% TNA)

| GBP | Fund | Index | Relative |
|----------------------------------|--------------|--------------|----------|
| >10bn | 20.3 | 6.3 | 14.0 |
| 5-10bn | 7.9 | 10.3 | -2.4 |
| 1-5bn | 30.6 | 63.3 | -32.7 |
| 0-1bn | 45.0 | 18.9 | 26.1 |
| Total Market Cap Exposure | 103.8 | 98.8 | |
| Index / Unclassified | 6.3 | 1.2 | |
| Total Equity Exposure | 110.0 | 100.0 | |

Country Exposure (% TNA)

| | Fund | Index | Relative |
|----------------------------------|--------------|--------------|----------|
| China | 31.6 | 10.9 | 20.7 |
| Indonesia | 17.8 | 1.8 | 15.9 |
| India | 13.0 | 22.7 | -9.7 |
| Taiwan | 9.3 | 31.5 | -22.3 |
| Korea (South) | 8.8 | 17.3 | -8.5 |
| Australia | 5.4 | 0.0 | 5.4 |
| Hong Kong | 5.3 | 3.9 | 1.4 |
| Thailand | 2.9 | 2.6 | 0.3 |
| USA | 2.3 | 0.2 | 2.2 |
| Philippines | 1.9 | 0.9 | 1.1 |
| Others | 11.8 | 8.2 | 3.6 |
| Total Geographic Exposure | 110.0 | 100.0 | |
| Other Index / Unclassified | 0.0 | 0.0 | |
| Total Equity Exposure | 110.0 | 100.0 | |

Geographic Location

| | Fund | Index | Relative |
|-----------|------|-------|----------|
| Taiwan | 6.6 | 0.0 | 6.6 |
| India | 3.4 | 0.0 | 3.4 |
| India | 3.4 | 0.0 | 3.4 |
| Indonesia | 3.1 | 0.0 | 3.1 |
| Indonesia | 2.4 | 0.0 | 2.4 |
| Indonesia | 2.2 | 0.0 | 2.2 |
| China | 2.1 | 0.0 | 2.1 |
| Taiwan | 2.1 | 0.2 | 1.9 |
| India | 2.0 | 0.0 | 2.0 |
| China | 1.9 | 0.0 | 1.9 |

Top Underweight Positions (% TNA)

| | Fund | Index | Relative |
|--------------------------------|------|-------|----------|
| Short Position - name withheld | -1.1 | 0.9 | -2.0 |
| Short Position - name withheld | -1.3 | 0.5 | -1.8 |
| MPI CORP | 0.0 | 1.0 | -1.0 |
| WINBOND ELECTRONICS CORP | 0.0 | 1.0 | -1.0 |
| Short Position - name withheld | -0.7 | 0.2 | -0.9 |
| LG INNOTEK CO LTD | 0.0 | 0.9 | -0.9 |
| PHISON ELECTRONICS CORP | 0.0 | 0.9 | -0.9 |
| TAIWAN UNION TECHNOLOGY CORP | 0.0 | 0.8 | -0.8 |
| Short Position - name withheld | -0.6 | 0.2 | -0.8 |
| Short Position - name withheld | -0.5 | 0.3 | -0.8 |

Full portfolio listings, with the appropriate time lag as agreed by the Board, are available on request from Fidelity Investment Trusts.
 Figures may not always sum to totals due to rounding

Approach and Style

The portfolio manager has a value contrarian investment style that aims to generate outperformance through fundamentals-driven bottom-up security selection approach within the investment universe. The portfolio manager's focus is on identifying fundamentally good businesses run by good management teams in segments of the market that are currently out of favour, which leads to greater valuation anomalies that offer a margin of safety.

Portfolio Construction – Explained

This factsheet contains information about the composition of the fund at a particular point in time. It aims to help you understand how the fund manager is positioned to achieve the fund's objectives.

The Equity Exposure table provides an overall view of the fund. Net Equity represents - in percentage terms - how much of the fund is invested in the market, netting off long and short positions. The higher the figure, the more the fund will take part in any market rises (or falls). It is important to note that Net Equity can be greater than 100% (for example if the manager is using derivative contracts) and when it is, the portfolio may be described as geared.

The exposure and positioning tables on page 2 break the fund down into a number of different views, each providing a different perspective on the fund's investments.

Administrative & Dealing Information

Financial Year End: 31st July
Reference currency: UK Sterling (GBP)
Company domicile: United Kingdom
Company legal structure: Investment Trust
Capital guarantee: No
ISIN: GB0003322319
SEDOL: 0332231
Bloomberg: FAS LN
Distribution frequency: Annual
Charges made to income or capital: 25/75
Ongoing Charges: 0.95%
Annual Management Charge: 0.70% (net assets) +/- 0.20% (based on performance relative to the Market Index)
Last VMF adjustment (+/- 0.2%) applied at month end: -0.20%

Independent Assessment

Information in this section is the latest available at date of publication. Further details can be found in the Glossary section of this factsheet. As some ratings agencies may use past performance to produce their assessments, these are not a reliable indicator of future results.

Morningstar rating™ : ***

How data is calculated and presented

Portfolio composition data has been calculated and presented according to several general principles, which are listed below.

- **Aggregation :** all investments, including derivatives, linked to a particular issuing company have been combined to form a total percentage holding for each company. The aggregate holding is referred to in this factsheet as a position. Where a company is listed in two separate countries, each listing may be classified as a separate issuing company. Exchange Traded Funds (ETFs) and derivatives on ETFs are treated as individual securities - ie not aggregated.
- **Categorisation :** for investments that have underlying securities we use the attributes of the underlying issuing company or common share to determine the appropriate sector, market capitalisation band and geographic area.
- **Derivatives:** all derivatives are included on an exposure basis and, where necessary, are delta-adjusted. Delta-adjusting expresses derivatives in terms of the equivalent number of shares that would be needed to generate the same return.
- **"Basket" securities:** securities that represent a number of company shares - like index futures or options - are allocated to categories (such as country) whenever possible. Otherwise they are included in the "Other Index / Unclassified" category.

Glossary / Additional Notes

Equity Exposure notes

GROSS MARKET EXPOSURE

Gross Market Exposure is the total of long exposures, plus the total of short exposures, and less the total of exposures hedging the portfolio, expressed as a percentage of shareholders' funds (Total Net Assets).

NET EQUITY

The net positive exposure to the market with short and hedge positions subtracted from long positions.

OTHER

The value of any non-equity investments (excluding cash funds) expressed as a percentage of TNA.

UNINVESTED CASH

This is 100% minus the fund's Net Equity exposure and minus Other. This leaves any residual cash exposure that is not invested in shares or via derivatives.

Investment Company Facts

NAV

The total value of a company's assets less the total value of its liabilities is its net asset value (NAV). For valuation purposes it is common to divide net assets by the number of shares in issue to give the net assets per share. NAV calculations can include or exclude current financial year income. For the purposes of this factsheet, they are valued with assets including income and costs and with debt valued at the market.

PREMIUM

If the share price of an investment company is higher than the net asset value (NAV) per share, the company is said to be trading at a premium. The premium is shown as a percentage of the NAV.

DISCOUNT

If the share price of an investment company is lower than the net asset value (NAV) per share, the company is said to be trading at a discount. The discount is shown as a percentage of the NAV.

GEARING

Gearing is the Market Exposure figure (either gross or net) expressed in excess of Total Net Assets. It represents the additional exposure to the market above Shareholders' Funds.

FAIR VALUE

The fair value of investments is initially taken to be their cost and is subsequently measured as follows: Listed investments are valued at bid prices, or last market prices, depending on the convention of the exchange on which they are listed, and

Unlisted investments are investments which are not quoted, or are not frequently traded, are stated at the Directors' best estimate of fair value and take account of the cost of the investment, recent arm's length transactions in the same or similar investments and financial performance of the investment since purchase.

General notes

TOTAL NET ASSETS (TNA)

The Company's total assets minus its total liabilities - also known as Shareholders' Funds. It represents the amount by which a company is financed through common and preferred shares.

INDEX

The index used in the positioning tables on page 2 is the index defined in the Performance Comparator section on page 1.

TOP NET LONG POSITIONS

Those companies in which the largest percentages of the investment company's total net assets are effectively invested (equity positions). Positions in other funds - including ETFs (Exchange Traded Funds) - can appear in this table, but index derivatives form part of an "Other Index / Unclassified" category which will not appear.

TOP OVERWEIGHT & UNDERWEIGHT POSITIONS

Those equity positions which have the largest active weight relative to the index. Positions in other funds - including ETFs (Exchange Traded Funds) - can appear in this table, but index derivatives form part of an "Other Index / Unclassified" category which will not appear. In the underweight table, any short position names have been withheld in line with Fidelity's disclosure policy.

NET LONG POSITIONS CONCENTRATION

Illustrates the weight of the top 10, 20 and 50 equity positions in the Company and the weight of the top 10, 20 and 50 equity positions in the index. It does not attempt to show the coincidence of security ownership between Company and Index. The sector/industry classification used (i.e. GICS, ICB, TOPIX and IPD) varies by fund. Full descriptions can be found below.

Glossary / Additional Notes

ONGOING CHARGES

Ongoing Charges are taken from the Company's most recent Annual Report and represents the total of investment management fees and other expenses of the Company (excluding transaction costs, interest payments, tax and non-recurring expenses) expressed as a percentage of the average net asset value throughout the financial year.

SECTOR INDUSTRY CLASSIFICATION

GICS: Global Industry Classification Standard (GICS) was developed by Standard & Poor's and MSCI Barra. GICS consists of 11 sectors, 24 industry groups, 68 industries and 157 sub-industries.

More information is available at <http://www.standardandpoors.com/indices/gics/en/us>

ICB: The Industry Classification Benchmark (ICB) is an industry classification developed by Dow Jones and FTSE. It is used to segregate markets into sectors within the macroeconomy. The ICB uses a system of 10 industries, partitioned into 20 supersectors, which are further divided into 41 sectors, which then contain 114 subsectors.

More information is available at <http://www.icbenchmark.com/>

Legal Information

Fidelity International refers to the group of companies which form the global investment management organisation that provides information on products and services in designated jurisdictions outside of North America.

Fidelity only offers information on its own products and services and does not provide investment advice based on individual circumstances.

This communication is not directed at, and must not be acted upon by persons inside the United States and is otherwise only directed at persons residing in jurisdictions where the relevant funds are authorised for distribution or where no such authorisation is required.

Unless otherwise stated, all views are those of Fidelity.

Reference in this document to specific securities or funds should not be construed as a recommendation to buy or sell them, but is included for the purposes of illustration only. Investors should also note that the views expressed may no longer be current and may have already been acted upon by Fidelity. The research and analysis used in this documentation is gathered by Fidelity for its use as an investment manager and may have already been acted upon for its own purposes.

Fidelity, Fidelity International, the Fidelity International logo and F symbol are trademarks of FIL Limited.

This fund is managed by FIL Investments International.

Morningstar annualised growth rates, total return, sector median performance and ranks - Data Source - © 2026 Morningstar, Inc. All Rights Reserved. The information contained herein: (1) is proprietary to Morningstar and/or its content providers; (2) may not be copied or distributed; and (3) is not warranted to be accurate, complete or timely. Neither Morningstar nor its content providers are responsible for any damages or losses arising from any use of this information.

Before investing you should read the latest Annual Report and Key Features Document, which are available from www.fidelity.co.uk/its.

Issued by FIL Investment Services (UK) Limited, a firm authorised and regulated in the UK by the Financial Conduct Authority. FIL Investment Services (UK) Limited is registered in England and Wales under the company number 2016555. The registered office of the company is Beech Gate, Millfield Lane, Lower Kingswood, Tadworth, Surrey, KT20 6RP, United Kingdom.