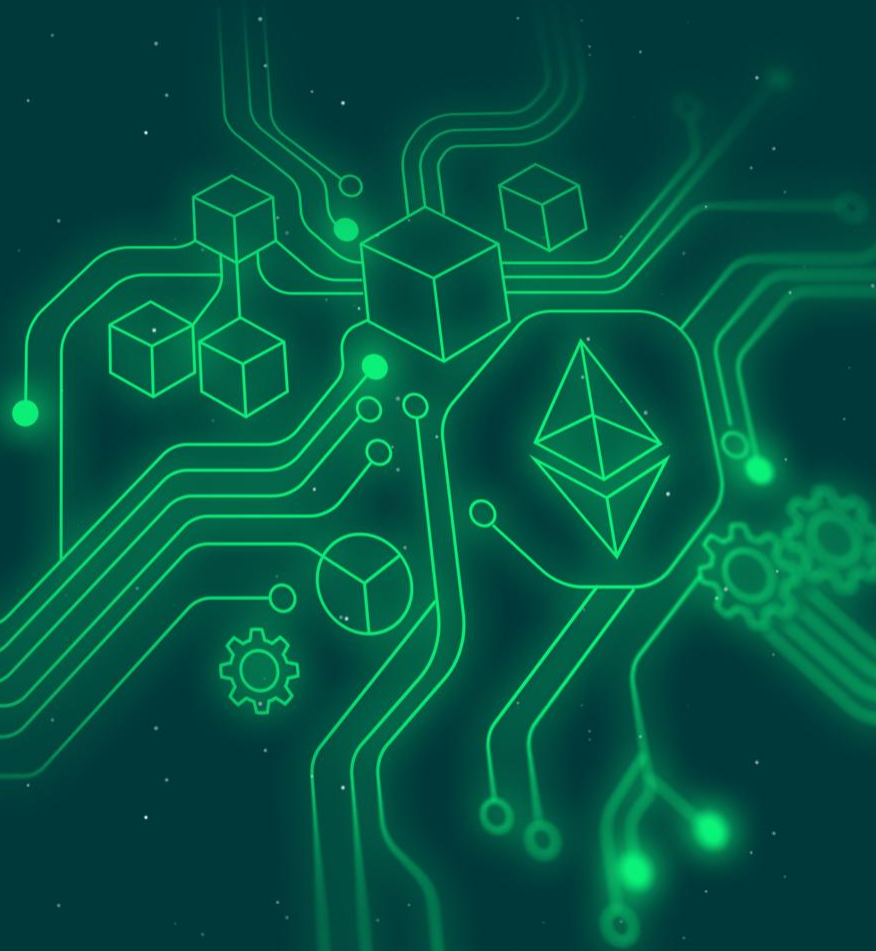




# ***Creating Value Through Breakthrough Technologies***





# Strategy Overview



**Ethtry PLC is an operational company listed on the Aquis Stock Exchange.**

Ethtry PLC has a strategic focus on acquiring, managing, and developing assets within breakthrough technology sectors, alongside running an Ethereum Treasury.

The Company's operational activities are concentrated on opportunities within quantum technologies, artificial intelligence, datacentres, energy transition and energy storage infrastructure, as well as applications across the Web3 ecosystem.



# Organisational Structure



## Executive Board

### PATRICK CHOPARD

CEO

15+ Years Tier-1 Investment Banking. Former Director at Barclays, Deutsche Bank and Nomura. Deep expertise in structured finance and capital markets.



### OLIVER MURPHY

CFO

Chartered Accountant with 30+ years experience. Former Deloitte Partner responsible for transaction services and risk management.



## Team

**MIKE MURPHY**  
UK MARKETS

**JOHN ROBINSON**  
COMPANY SECRETARY

**JOE SLUYS**  
COMMUNICATION STRATEGY

**RODERIC OWEN-THOMAS**  
MIDDLE EASTERN MARKET

**JAMES LAWRENCE**  
US MARKETS

## Advisory Board

### MIKE FOY

CFO, AMINA BANK

Chief Financial Officer at AMINA. 8 years in senior finance/strategy at Barclays. Expert in digital asset banking and financial strategy.

### MARC DEGEN

ENTREPRENEUR & BOARD MEMBER

Co-Founder in Web3/Telecom. Board member at Pyth Data Association & Telecom Liechtenstein. Focus on decentralization and digital ecosystems.



# Investing In The Future



## BREAKTHROUGH TECHNOLOGIES

Powering the future of compute and energy through Quantum, AI and next-generation storage systems.

## DeFi & ETHEREUM ECOSYSTEM

Developing and managing businesses across the Ethereum ecosystem to integrate DeFi into our core business model.

## PARTNERSHIPS & STRATEGIC ALLIANCES

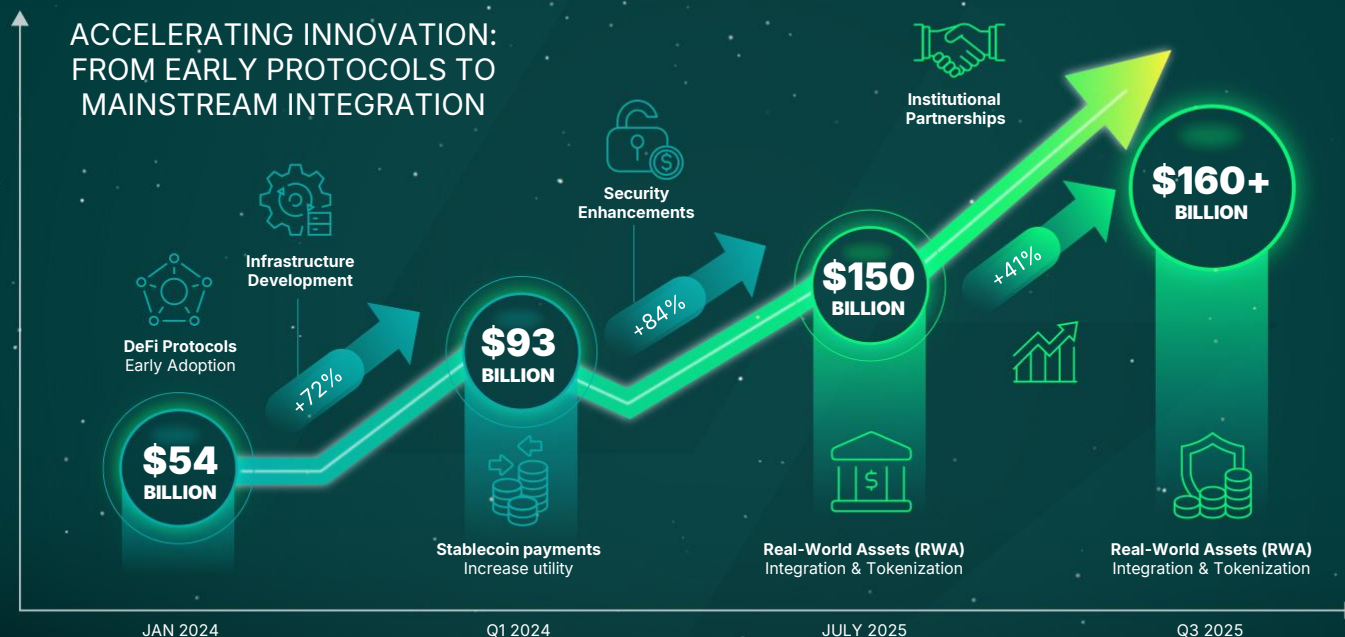
Building mutually beneficial partnerships with selected companies synergistic with the operational business and Ethereum treasury

## ETHEREUM TREASURY

A foundational capital reserve providing the liquidity and resilience required for long-term growth.



# Explosive Growth In Tokenised Asset Value Forecast To Hit \$16 Trillion By 2030



## DEFI EXPLOSION

TVL growth from \$54 Billion to \$160 Billion+ signals renewed institutional confidence.

Source: DefiLlama, BCG Analysis 2024

## RWA INTEGRATION

Real-World Assets projected to reach \$16 Trillion by 2030.

## PAYMENT UTILITY

Stablecoin volumes surpassing traditional payment networks.



# ETH vs BTC: The ETH Treasury Case



## CORPORATE TREASURY ASSET COMPARISON

	<b>BITCOIN (BTC)</b> <b>TREASURY STRATEGY</b> Digital Gold – Store of Value & Security	<b>ETHEREUM (ETH)</b> <b>TREASURY STRATEGY</b> Smart Contract Platform – Growth & Utility
<b>YIELD GENERATION</b>	<b>0%</b> (Non-Interest Bearing)	<b>3-5%</b> (Staking & DeFi Yields)
<b>ENERGY EFFICIENCY</b>	<b>HIGH CONSUMPTION</b> (Proof-of-Work Mining)	<b>MINIMAL</b> (Proof-of-Stake Consensus)
<b>PROGRAMMABILITY</b>	<b>LIMITED</b> (Scripting only, Basic Transactions)	<b>FULL SMART CONTRACTS</b> (Complex Logic, Automation)
<b>Defi ACCESS</b> (DECENTRALIZED FINANCE)	<b>NONE</b> (Traditional Finance Gateway Needed)	<b>EXTENSIVE</b> (Direct Access to DeFi Ecosystem, Yield Farming, Liquidity Providing)
<b>INSTITUTIONAL ADOPTION TRENDS</b>	<b>STEADY, MATURING</b> (Established Store of Value)	<b>RAPID, ACCELERATING</b> (Utility & Infrastructure Adoption)

### Yield Generation

Unlike BTC (digital gold), ETH is a productive asset generating 3-5% native yield through staking.

### Deflationary Supply

Post-Merge mechanics burn ETH with usage, creating a deflationary supply dynamic superior to BTC's inflation.

### Utility & Ecosystem

ETH powers the entire DeFi and RWA ecosystem, providing intrinsic utility demand beyond store of value.



# Ethereum Treasury Strategy



Board-approved framework for institutional-grade digital treasury management



## Asset Strategy

- Experienced investment management team
- ETH + L2 focus
- Staged investment approach
- Staking yield optimisation



## Custody & Security

- Amina Bank (Swiss FINMA) as custody, trading, intelligence and key partner
- 2-Director multi-sig
- Cold & hot storage for holdings
- Institutional-grade only



## Governance

- Investment committee
- Board approval for all transactions
- Annual external audit
- Regular third party reporting
- IFRS compliance



# Aquis Market Listing

A regulated, transparent, and institutional-grade environment for growth



Stock Ticker

AQSE: **ETHY**

## Regulated Environment

Aquis operates under a recognized investment exchange framework with a clearly defined Crypto Assets Policy, ensuring high standards of corporate governance.



## Liquidity & Growth

Enhanced visibility and trading liquidity, supporting ETHRY's strategy to scale its digital treasury and investments.

## Institutional Access

Provides a gateway for institutional capital to access the digital asset economy through a familiar and compliant equity structure.



## PARTNERSHIP: Amina Bank

Bringing Financial Expertise & Market Intelligence



**AMINA Bank** is a globally recognised digital asset bank, combining traditional banking services with regulated crypto-native financial solutions. Operating under the supervision of the Swiss Financial Market Supervisory Authority (FINMA), **AMINA** provides institutional-grade services across digital asset custody, trading, staking, and structured products, alongside conventional banking offerings.

The partnership supports Ethtry's evolving operating strategy and Ethereum Treasury by providing access to regulated banking infrastructure, digital asset services and institutional expertise spanning both traditional finance and decentralised technologies.

Ethtry collaborates with AMINA across a number of strategic areas:



**Business Development**



**Technical Innovation**



**Macro Intelligence**



# INVESTMENT IN & PARTNERSHIP WITH: Liechtenstein Trust Integrity Network "LTIN"



**LTIN** operates as a public-private partnership majority-owned by state-owned Telecom Liechtenstein, delivering sovereign blockchain infrastructure under the Blockchain Act (TVTG) with full EU MiCAR compliance. The network provides enterprises with regulatory certainty, data sovereignty through GDPR-compliant processing, and institutional-grade security powered by 100% renewable energy.

**Ethtry is an equity holder of LTIN and has engaged in a partnership spanning across various areas of the LTIN.**

## **Ethtry's involvement in the LTIN is focused on:**

- Core Service – expand and enhance capabilities validator node infrastructure
- Co-Innovation on DAT excellence
- Engagement across both our operational strategy as well as improving and enhancing our Ethereum Treasury Strategy.



# INVESTMENT IN & PARTNERSHIP WITH: Liechtenstein Trust Integrity Network "LTIN"



**LTIN's partnership with Ethtry is centered around 3 pillars of collaboration:**



## **Product Development and Co-Innovation**

- DAT-focused product development
- Regulatory expertise
- Sandbox environment for PoCs



## **Market Development and Commercialisation**

- Joint go-to-market strategy
- Revenue sharing and incentives
- Brand amplification through case studies



## **Infrastructure and Core Services**

- Trusted validator network
- Verifiable Legal Entity Identifiers (vLEIs)
- Regulated infrastructure and partnerships





# ***Join the Future of Breakthrough Technologies***



[www.ethtry.com](http://www.ethtry.com)



[info@ethtry.com](mailto:info@ethtry.com)

This presentation is for informational purposes only and does not constitute an offer to sell or a solicitation of an offer to buy any securities.  
ETHTRY is listed on the Aquis Stock Exchange. Past performance is not indicative of future results.



# Disclaimer



## Important Notice

This presentation is provided for information purposes only and does not constitute, or form part of, any offer to sell or solicitation of an offer to buy any securities, nor does it constitute investment advice or a recommendation. It should not be relied upon in connection with any investment decision.

ETHTRY is listed on the Aquis Stock Exchange. Any investment decision relating to ETHTRY should be made solely on the basis of publicly available information released by the Company in accordance with its disclosure obligations, and, where appropriate, independent professional advice.

Past performance is not a reliable indicator of future results. The value of investments and any income from them may go down as well as up, and investors may not get back the amount originally invested.

A full risk disclosure, including risks relating to Ethereum and digital assets, is available at:

<https://ethtry.com/risk-disclosure/>



# Appendix



# 2026: The Sovereign Infrastructure Supercycle



Transitioning from 'Speculative Retail' to 'Regulated Institutional' Foundations

## The Speculative Era

2017-2024

- Retail-Driven Volatility
- Yield-Only Focus
- Shadow Banking Risks
- Anonymity-First Architecture

## The Sovereign Era

2025+

- State-Backed Compliance (LTIN)
- Institutional Custody
- Sovereign Digital Identity
- Real-World Asset (RWA) Integration

SSI/Identity Sector Growth

**\$115 Billion+**

Spot ETF Flows

**7.8 Billion by 2031**

CBDC Transactions

**170+**

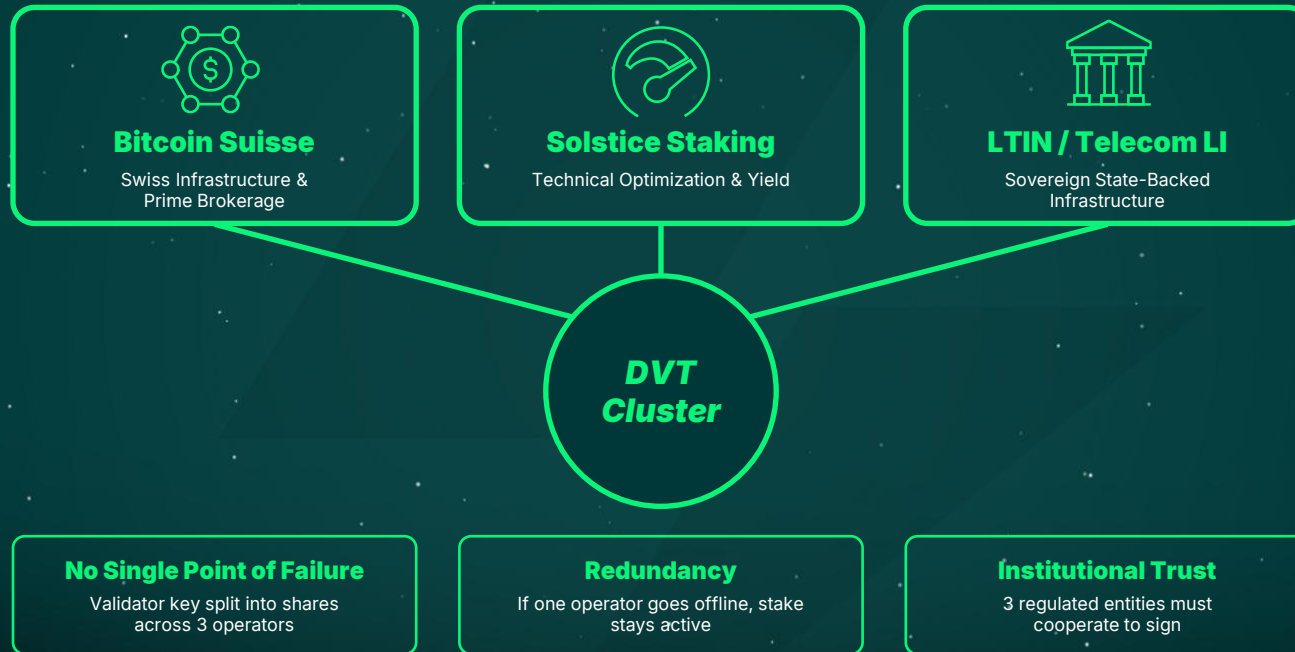
DAT Public Companies



# Superior Staking: The DVT Advantage



Distributed Validator Technology (DVT): Security without centralisation risk



Powered by Obol DVT Technology | Multi-Operator Security: Bitcoin Suisse + Solstice + LTIN